



Color Your Way to an Improved Workplace

BBP®37 Color and Cut Sign and Label Printer

BBP®35 Multicolor Sign and Label Printer

Color Your Way to an

Unprecedented capabilities set the new standard in safety and facility identification

Because safety and productivity mean the world to you, it's time to step up to the new standard by creating signs and labels that demand attention. After all, effective workplace visuals make all the difference in taking your facility to the next level by giving employees the information they need at a glance. **And now there's a tool to do it all!**

Brady's BBP®35 and BBP®37 sign and label printers give you the power to make signs and labels in the colors and shapes you need to make an impact – right at your own facility and right when you need them. With remarkable multi-color printing, versatile shape-cutting capabilities and impressively fast print speeds, you'll never know how you lived without one of these printers.

Faster. Easier. More versatile. Expect nothing less!



Multiple print colors

- Print signs and labels that are more noticeable, more memorable and more effective
- Color is the differentiator when you need to effectively improve workplace safety and productivity



Shape cutting

- Revolutionary built-in XY plotter-cutter system in the BBP37 printer
- Cut out shapes and text, or cut around your message to create labels that look and fit just how you want them to

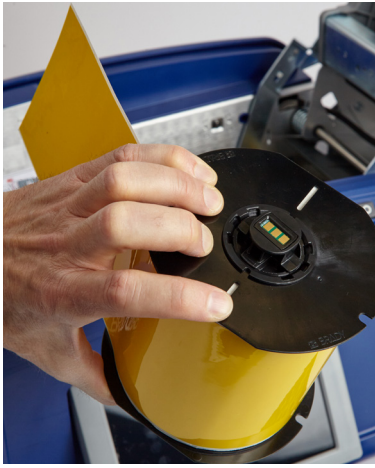


Label making made easy

- Incredibly easy and intuitive so anyone can walk up and print labels
- Ideal for multiple users, centralized locations and lean/5S events
- Compatible with powerful Brady Workstation Software for added versatility



Improved Workplace



Automatic label setup

- Printers read critical information from the supply cartridge and then automatically set up the label attributes so you can start printing immediately
- No more calibration or wasted labels, no print speed/burn temperature trial labels, no scrolling through screens to select a label and no wasted time setting up label dimensions or text size

20-second material changeovers

- “Drop in” ribbons and labels mean no complicated threading, assembling spindles, sensor adjustment or calibration steps
- You can get on with the job faster, giving you more time for other tasks



Five inches per second print speed

- Fast processing time and print speed mean you don't have to wait around for your labels



Table of contents

Facility and safety ID

Indoor/Outdoor Vinyl	5
Low-Halide Polyester	5
Retro Reflective Labels	5
Pre-Printed Pre-Cut Blank Sign Headers	6
Pre-Printed GHS/CLP Chemical Labels	6
Raised Profile Labels.....	7
Cold Temperature Material	7
Printable Magnetic Supply	8
Repositionable Vinyl.....	8
ToughWash® Washdown Resistant Labels.....	8
ToughStripe® Printable Floor Tape.....	9
BradyGlo Photoluminescent Tape.....	9
Non-Adhesive Tags	9
Product ID Materials.....	10
Metallized Polyester Labels	10
Circle Gauge Labels	11
Gradient Labels	11
Make Your Own Rigid Valve Tags.....	11
Blank Rigid Panels	12

Software

Printers and accessories

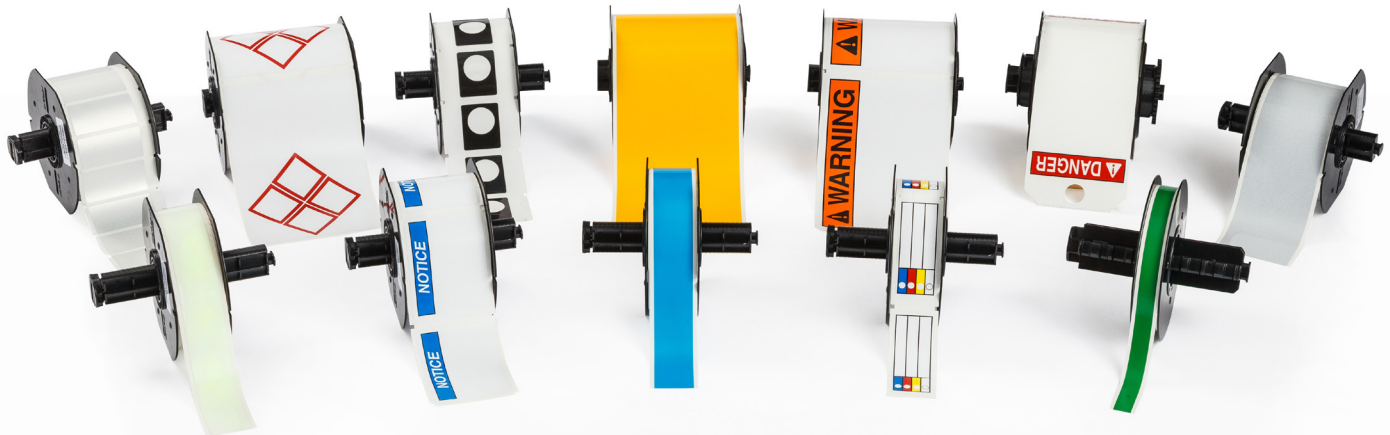


Legendary material performance

- Brady labels are reliable and durable because we design labels in our own facilities and put them through rigorous R&D tests and trials before they're ready for use
- Nothing leaves our doors without meeting our standards
- Some last up to 10 years outdoors. Stick to rough surfaces or smooth; dirty surfaces or clean; in harsh conditions or normal conditions. With that kind of reliability, you'll only need to make these labels once

Lots of options

- Print pipe labels, GHS chemical labels, labels that glow in the dark and labels that aren't even labels at all (they're tags!)
- With more than 300 parts, you can label it all
- Any "B30" label or ribbon supply is compatible for use in BBP35 and 37 sign and label printers, if it was manufactured after September 1, 2015





Indoor/Outdoor Vinyl (B-595)

- For general facility and safety identification: Our best industrial vinyl yet!
- Durable, low-shrink vinyl with our most aggressive adhesive
- Conforms to irregular, curved, rough and highly textured surfaces (painted cinder blocks, uneven wood, textured plastics, paper-jacketed pipes, powder-coated surfaces)
- Adheres to “difficult” low-surface energy items (PVC piping, blow-molded equipment cases, ABS plastics, recycled plastics)

Service temp: -40°F to 180°F
 Application temp: 0°F to 180°F
 Average outdoor durability: 8–10 years
 Agency approvals: RoHS

▶ **Continuous tape from 0.5 to 4 in. widths
 12 color options**

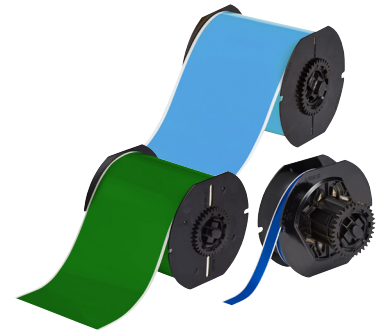


Low-Halide Polyester (B-569)

- Low-halide content for labeling stainless steel pipes and surfaces
- Applies best to very smooth surfaces and ideal for mounting to rigid panels

Service temp: -40°F to 212°F
 Application temp: 0°F to 212°F
 Average outdoor durability: 3–5 years

▶ **Continuous tape from 0.5 to 4 in. widths
 16 color options**

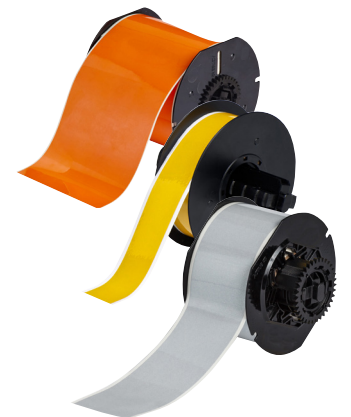


Retro Reflective Tape (B-584)

- Highly reflective material shines back brightly when struck by light
- Ideal for labeling outdoor utility pedestals, hard hats, jobsite equipment and roof-top equipment
- Recommended for low light or inclement weather conditions

Service temp: -40°F to 158°F
 Application temp: 0°F to 158°F (yellow & orange), 50°F to 158°F (silver)
 Average outdoor durability: 4–6 years

▶ **Continuous tape from 1.125 to 4 in. widths
 3 color options**



▶ Find materials or download the Label and Ribbon Guide at BradyID.com/B30-B33Labels



Pre-Printed Pre-Cut Blank Sign Headers (B-595)

- Allows printer to create multicolor signs fast — in a single print pass
- 6 headers and 2 blank label options meet NFPA 70E, OSHA 1910.145 and ASME/ANSI Z535 standards
- Indoor/outdoor grade material conforms to rough, highly textured and difficult-to-adhere-to surfaces

Service temp: -40°F to 180°F
 Application temp: 0°F to 180°F
 Average outdoor durability: 8-10 years
 Agency approvals: RoHS

- ▶ **Die-cut sizes 2.25 in. x 3 in. and 4 in. x 6 in., and additional blank die-cut sizes**
- ▶ **6 headers and 2 blank color options**



Pre-Printed GHS / CLP Chemical Labels (B-7569)

- Blank labels with pre-printed red diamonds allow the printer to produce 2-color GHS / CLP labels in one print pass
- 4 sizes of labels with 7 diamond layouts that match templates in the printer app or in the Brady Workstation GHS App
- Indoor/outdoor vinyl and polyester material and durable inks withstand exposure to moisture, chemicals and handling

Service temp: -4°F to 180°F
 Application temp: 50°F to 180°F
 Average outdoor durability: 3-5 years

- ▶ **4 die-cut sizes up to 4.13 in. x 6.1 in.**
- ▶ **7 diamond layout options**



Pre-Printed Right-To-Know Chemical Labels (B-595)

- Produce 5-color chemical labels in a single print pass
- Indoor/outdoor grade material withstands exposure to moisture, chemicals and handling

Service temp: -40°F to 180°F
 Application temp: 0°F to 180°F
 Average outdoor durability: 8-10 years
 Agency approvals: RoHS

- ▶ **NFPA diamond and color bar layouts in a variety of sizes**



▶ Find materials or download the Label and Ribbon Guide at BradyID.com/B30-B33Labels



Raised Profile Labels/Engraved Plate Substitutes Labels (B-593)

- High-gloss, polyester label with thick raised profile and ultra-aggressive adhesive (0.70 mm thick)
- High-performance, low-cost substitute for engraved plates
- 10-year outdoor durability rating
- Printout in approximately 4 seconds

Service temp: -4°F to 212°F
 Application temp: 50°F to 212°F
 Average outdoor durability: up to 10 years
 Agency approvals:

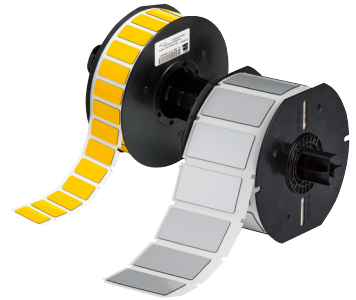


Costs up to 80% less than engraved legend plates!



- ▶ **Push button style:**
 5 push button sizes (including keyed and non-keyed, 22.5 mm and 30.5 mm hole dia.)
 5 color options

- ▶ **Rectangular style:**
 7 sizes from 0.5 in. x 1 in. to 2.5 in. x 3 in.
 6 color options



Cold Temperature Application Material (B-549)

- Special adhesive permanently adheres to extremely cold surfaces
- Can be applied in -10°F and lasts in -40°F
- Ideal for cold storage warehouses, coolers, freezers and short-term winter outdoor use

Service temp: -40°F to 212°F
 Application temp: -10°F to 212°F
 Average outdoor durability: up to 1 year

- ▶ **Continuous tape from 1.125 to 4 in. widths**
 2 color options





Printable Magnetic Supply (B-509)

- Easiest and quickest material for removing and repositioning
- Non-adhesive magnetic material that can be printed on directly
- Ideal for reusable, repositionable and lean / 5S identification applications

Service temp: 0°F to 158°F

Average outdoor durability: 3-5 years

- ▶ **Continuous media from 2.5 to 4.25 in. widths**
- 2 color options**



Repositionable Vinyl (B-581)

- Aggressive adhesive stays in place but removes cleanly without leaving adhesive residue
- Ideal for temporary, removable and repositionable labels, such as 5S and lean inventory labels

Service temp: -40°F to 180°F

Application temp: 50°F to 180°F

Average outdoor durability: 5 years

- ▶ **Continuous tape from 0.5 to 4 in. widths**
- 2 color options**



ToughWash® Washdown Resistant Labels (B-854, B-855)

- Withstands high pressure, heat, harsh chemicals and numerous washdown cycles
- B-854 offers metal detectable layer for detecting foreign debris in food stream
- Legible and long lasting for even the toughest washdown cycles
- Ideal for use in the food and beverage industry

Service temp: -40°F to 230°F

Agency approvals: RoHS

- ▶ **3 header labels sized at 4 in. x 6 in.**
- 2 continuous blank colors from 1.125 to 4 in. wide**





▶ Find materials or download the Label and Ribbon Guide at BradyID.com/B30-B33Labels

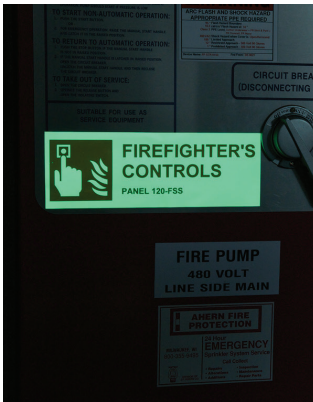


ToughStripe® Printable Floor Marking Tape (B-483 with overlaminate)

- Revolutionary B-483 material has ultra-aggressive adhesive
- Withstands forklift and pallet jack traffic without tearing or lifting
- Easy 3-step process: print label, position on floor, apply overlaminate
- Each roll ships with a roll of clear overlaminate which must be applied over printed label and onto appropriate surface for best performance

Service temp: -40°F to 248°F
Agency approvals:  

- ▶ Continuous tape from 1.125 to 4 in. widths
7 color options



BradyGlo™ High-Intensity Photoluminescent Tape (B-526)

- For glow-in-the-dark identification up to 10 hours
- Designed for directional, evacuation and equipment marking
- Ideal for marking emergency utility shut-offs, fire extinguishers, alarm pulls and vital equipment controls
- Complies with indoor use requirements specified in RS 6-1 and 6-1A of New York Local Law 26

Service temp: -40°F to 140°F
Application temp: 40°F to 140°F

- ▶ Continuous tape from 1.125 to 4 in. widths
Luminous green color



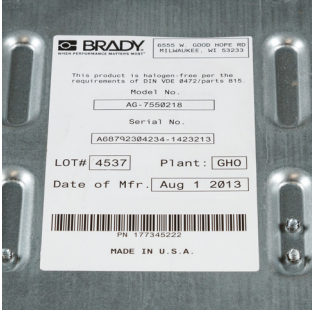
Non-Adhesive Tags (B-551)

- Non-adhesive semi-rigid plastic in pre-cut and continuous styles
- Pre-cut with hole and chamfered corners
- Micro-perforated between tags to separate cleanly

Service temp: -40°F to 193°F
Average outdoor durability: up to 2 years

- ▶ Die-cut tags 3.25 in. x 5.75 in.
Continuous media from 2.5 to 4.25 in. wide
3 headers and 1 blank color options





Product ID Materials

- A variety of polyester and specialty materials in wide 4.0 in. format rolls
- Ideal for smaller volume custom product ID and general industrial labels
- Proven materials with agency approvals for product ID and asset tracking applications



▶ **Continuous tapes in 4 in. widths
6 color options**

- B-424:** Paper
- B-423:** Polyester with standard adhesive
- B-428:** Metallized polyester with standard adhesive for smooth surfaces
- B-432:** Polyester with stronger adhesive
- B-434:** Metallized polyester with stronger adhesive for textured surfaces
- B-437:** Tedlar® for high-temp labeling and cable wraps*
- B-480:** Non-metal polyester with rubber-based adhesive for oily/greasy surfaces
- B-483:** Polyester with ultra-aggressive adhesive for rough surfaces
- B-484:** Polyester with ultra-aggressive adhesive and pliability for angular surfaces
- B-489:** Polyester with ultra-aggressive adhesive for rough surfaces
- B-488:** Polyester with standard adhesive and chemical resistance
- B-486:** Metallized polyester with ultra-aggressive adhesive for rougher surfaces
- B-498:** Vinyl cloth
- B-565:** Metallized polyester with standard adhesive
- B-595:** Indoor/outdoor vinyl
- B-724:** Polyimide label for extremely high temperatures
- B-727:** Polyimide label for standard temperatures
- B-787:** Polyvinylflouride tape

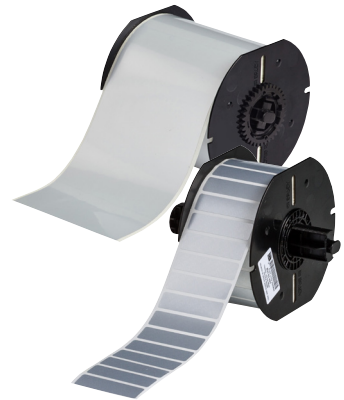
Matte bright white	Service temp: -40°F to 124°F	RoHS
Gloss white	Service temp: -94°F to 248°F	UL RoHS CE
Matte silver	Service temp: -40°F to 293°F	UL RoHS CE
Clear	Service temp: -40°F to 212°F	UL RoHS CE
Gloss silver	Service temp: -40°F to 194°F	UL RoHS CE
	Service temp: -94°F to 275°F	RoHS
Satin light gray	Service temp: -94°F to 248°F	UL RoHS
Gloss white	Service temp: -94°F to 248°F	UL RoHS CE
Gloss white	Service temp: -40°F to 240°F	UL RoHS
Matte white	Service temp: -94°F to 248°F	UL RoHS CE
Matte white	Service temp: -40°F to 320°F	RoHS CE
Matte silver	Service temp: -40°F to 248°F	UL RoHS CE
Semi-gloss white	Service temp: -40°F to 175°F	UL RoHS CE
Matte silver	Service temp: -40°F to 240°F	RoHS
Semi-gloss white	Service temp: -40°F to 180°F	RoHS
Matte amber	Service temp: -94°F to 518°F	RoHS
Gloss white	Service temp: -94°F to 212°F	UL RoHS
Gloss white	Service temp: -94°F to 212°F	RoHS



Metallized Polyester Labels (B-428, B-434, B-486, B-565)

- For product labeling, asset tracking and general industrial ID
- Ideal for serial number plates and rating plates with name-plate quality and metal-looking finish
- 3 adhesive strengths/gloss configurations and sizes to meet your needs

B-428: Service temp: -40°F to 293°F	Agency approvals: UL RoHS CE
B-434: Service temp: -40°F to 194°F	Agency approvals: UL RoHS CE
B-486: Service temp: -40°F to 248°F	Agency approvals: UL RoHS CE
B-565: Service temp: -40°F to 240°F	Agency approvals: RoHS



▶ **Continuous tapes in 4 in. widths
Die-cut labels up to 3 in. x 2 in.**

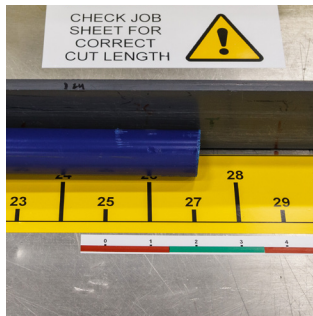
▶ Find materials or download the Label and Ribbon Guide at BradyID.com/B30-B33Labels

* Tedlar is a registered trademark of E.I. du Pont de Nemours and Company.



Circle Gauge Labels (B-595)

- Create circle gauge labels with white tape, multi-colored paneled ribbons and the built-in Circle Gauge App on the BBP37 printer
- Create labels to the specific diameter and range of values for your gauge – small or large gauges
- App allows you to create in-zone, out-of-zone, caution zone(s) or all three
- Multiple gauge labels can be printed/cut within a single ribbon panel to optimize ribbon usage
- Specify center hole size to facilitate accurate label placement and visibility of info that may be printed on your gauge



Gradient Labels (B-595)

- Create accurate scale or "ruler" labels using the built in Gradient Label App on the printer with continuous supplies
- Specify units in inches or millimeters, and choose from several interval tick mark options
- Include multiple colors on your label for multiple "zones"
- For scales longer than 7 feet (for example: labeling a large tank) combine multiple strips and set start point on second label to start where first label left off



Make Your Own Rigid Valve Tags

- Print labels on your Brady printer and apply them to these industrial-grade plastic tags
- Outdoor tag withstands temps -40°F to 180°F
- Die-cut (pre-cut) label supplies fit recessed area on tag



Labels and Ribbon for Making Valve Tags

Catalog #	Color	Label Size	Labels per Roll
B30-219-595-BLNKWT	White	2.25 in. x 3.85 in.	250 pcs for LG tag
B30-242-595-BLNKWT	White	1.125 in. x 2.85 in.	300 pcs for SM tag
B30-R10000	Black	Continuous 200 ft.	Print Ribbon

Tag Sizes

Description	Height Inch (mm)	Width Inch (mm)
Large Tag	2.500 (63.5)	4.000 (101.6)
Small Tag	1.500 (38.1)	3.000 (76.2)

Fits Printer Model(s)	Small Tag Catalog #	Large Tag Catalog #	Color
BBP37,35, 31, 33	41920	41921	Black
BBP37,35, 31, 33	41922	41923	Yellow
BBP37,35, 31, 33	41924	41925	Red
BBP37,35, 31, 33	41926	41927	Blue
BBP37,35, 31, 33	41928	41929	Green
BBP37,35, 31, 33	87694	87695	Orange
BBP37,35, 31, 33	87696	87697	White
BBP37,35, 31, 33	87698	87699	Gray
BBP37,35, 31, 33	87710	87711	Brown
BBP37,35, 31, 33	87712	87713	Tan
BBP37,35, 31, 33	142133		Variety Pack*

* Variety Pack combines 30 tags including at least one of each size and color. Perfect for evaluating which sizes and colors you need.



Blank Rigid Panels

- Create rigid labels and signs using adhesive output from your printer
- Ideal for labeling situations and surfaces where applying an adhesive label is difficult
- Panels are sized slightly larger than label output to facilitate centered and accurate placement of label on panel
- Labels can be hand-applied to panel or applied using a BLS1255 cold press laminator
- Panels are pre-drilled with holes in corners for mounting with screws or cable-ties
- Panels can also be mounted using foam tape or magnetic strips (available below)



Catalog #	Material	Color	Sign Height Inch (mm)	Sign Length Inch (mm)	Qty
Plastic Panels - rounded corners and hole punched					
13620	Plastic	White	4.25 (107.9)	6.25 (158.8)	10
146074	Plastic	White	4.25 (107.9)	10.25 (260.4)	10
146075	Plastic	White	4.25 (107.9)	14.25 (361.9)	10
146076	Plastic	White	2.50 (63.5)	6.25 (158.8)	10
146077	Plastic	White	2.50 (63.5)	10.25 (260.4)	10
13621	Plastic	Yellow	4.25 (107.9)	6.25 (158.8)	10
146078	Plastic	Yellow	4.25 (107.9)	10.25 (260.4)	10
146079	Plastic	Yellow	4.25 (107.9)	14.25 (361.9)	10
146080	Plastic	Yellow	2.50 (63.5)	6.25 (158.8)	10
146081	Plastic	Yellow	2.50 (63.5)	10.25 (260.4)	10
Aluminum Panels - rounded corners and hole punched					
13629	Aluminum	White	4.25 (107.9)	6.25 (158.8)	10
106461	Aluminum	White	4.25 (107.9)	10.25 (260.4)	10
146082	Aluminum	White	4.25 (107.9)	14.25 (361.9)	10
146083	Aluminum	White	2.50 (63.5)	6.25 (158.8)	10
146113	Aluminum	White	2.50 (63.5)	10.25 (260.4)	10
13630	Aluminum	Yellow	4.25 (107.9)	6.25 (158.8)	10
146114	Aluminum	Yellow	4.25 (107.9)	10.25 (260.4)	10
146115	Aluminum	Yellow	4.25 (107.9)	14.25 (361.9)	10
146116	Aluminum	Yellow	2.50 (63.5)	6.25 (158.8)	10
146117	Aluminum	Yellow	2.50 (63.5)	10.25 (260.4)	10

Catalog #	Material	Width Inch (mm)	Length Inch (mm)	Qty
Laminator and Panel Mounting Accessories				
105038	BLS1255 Laminator			
78272	Double Sided Foam mounting tape (adhesive on both sides)	0.50 (12.7)	108 ft. (32.9 m)	1 roll
78273	Double Sided Foam mounting tape (adhesive on both sides)	0.75 (19.1)	108 ft. (32.9 m)	1 roll
97200	Double Sided Foam mounting tape strips (adhesive on both sides)	0.75 (19.1)	4.50 (114.3)	4 pcs
58301	Magnetic Strips (adhesive on one side, magnetic on other side)	1.00 (25.4)	4.00 (101.6)	10 pcs



BLS1255 Laminator



Double-sided foam tape roll



Double-sided foam tape strip



Magnetic strips

▶ Creating a Rigid Sign or Label



1. Choose your rigid panel, select the needed material size and print your adhesive label.



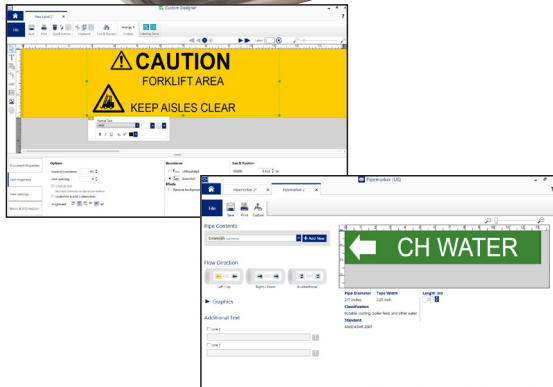
2. Peel away the first 1½ in. of liner from the label. Apply to rigid panel, aligning edge of label with edge of panel.



3. Insert panel and rotate handle until first 1 in. of panel is "pinched." Then grasp liner and pull it away as you rotate the handle to move the panel through laminator.



4. In less than 30 seconds you have a rigid sign ready to hang.



 **Download your free 30-day trial**

-  1. Download Brady Workstation at **workstation.bradyid.com**
-  2. Fill your workstation with individual apps or an entire suite
-  3. Save time by quickly designing labels and printing

Brady Workstation

Create complex labels with intuitive software

When you have more complex identification projects, connect the BBP35 or BBP37 to your PC and create labels with the intuitive Brady Workstation software.

This software is a combination of applications and software suites that are designed to help you easily create and print labels for a variety of applications in your facility. These apps and suites are tailored to make specific identification tasks throughout your facility fast and easy so you can complete the job with ease.

Apps

Developed with built-in regulations, standards, pictograms, common phrases, data importation guidance, help functions and more, you have the tools you need to create labels for nearly any application.

Suites

Choose from a variety of suites that combine various sets of apps to meet your labeling needs.



Safety and Facility Identification Suite

Keep your facility safe and compliant with this suite. This software makes it easy to create custom signs, labels and pipemarkers to add visual safety guidance to your facility.



Automation Suite

Get the power to fully automate your label printing with this suite. Easily set up templates and import data to make label creation an automated and error-free process.



Print Partner Suite

This suite includes everything you need to fill in your templates and print, including importing data from a variety of supported data sources or automatically generating sequential data for your labels.

Learn more about these and other apps and suites at Workstation.BradyID.com

Printer specifications

Multi-color label printers with unprecedented capabilities, unrivaled ease of use and the best materials. There's never been a better tool to label your entire facility.

BBP35 Printer and BBP37 Printer																			
Description	Facility, safety and lean/5S printer for walk up and print ease of use, fast supply changeovers, multicolor printing and ability to cut out text and shapes (cut outs enabled on BBP37 only). Best choice for "lean event" labeling situations and multiple-user locations because it has a very approachable interface and very fast supply changeovers.																		
Applications	Facility and safety ID, signs, pipe markers, lean/5S, arc flash labels, GHS and chemical labels, equipment labels, panel and push button labels, reflective and glow in the dark labels, tags, magnetic, cold-temp labeling. Cut-out text with BBP37 only.																		
Label material types	Extremely aggressive 8-10 year outdoor vinyl with high tack and chemical resistance, plus Toughstripe floor tape, wash-down material, 10-hr glow in the dark, reflective, magnetic, tags, engraved plate substitute and 20 other materials.																		
Includes	Printer, Power Cord, USB Cable, Cleaning Kit, Cutter Cleaning Tool, Quick Start Guide																		
Warranty	5 year																		
Printer Features:																			
Print resolution	300 dpi																		
Color printing capability	Multi color																		
Maximum print speed	5 in./sec																		
Cutter type	Auto cutter. BBP37 also has XY Cutter.																		
Media sensor adjustment	None																		
Display & User Interface:																			
Display type	Color touchscreen																		
Display size	3.63 in. x 6.0 in.																		
Keyboard type	Full Size QWERTY																		
Supply remaining gauge	Yes																		
Languages	English, Spanish, Portuguese, French																		
Units	Inches, millimeters, points																		
Stand-Alone Apps & Editing:																			
Built-in label wizards	<table border="0"> <tr> <td>Custom label</td> <td>Gradient scale</td> </tr> <tr> <td>GHS / CLP</td> <td>Right-to-know</td> </tr> <tr> <td>Safety signs</td> <td>WHMIS</td> </tr> <tr> <td>Pipe marker</td> <td>Tags</td> </tr> <tr> <td>Arc flash</td> <td>General templates</td> </tr> <tr> <td>Circle gauge</td> <td>Quick label</td> </tr> </table>	Custom label	Gradient scale	GHS / CLP	Right-to-know	Safety signs	WHMIS	Pipe marker	Tags	Arc flash	General templates	Circle gauge	Quick label						
Custom label	Gradient scale																		
GHS / CLP	Right-to-know																		
Safety signs	WHMIS																		
Pipe marker	Tags																		
Arc flash	General templates																		
Circle gauge	Quick label																		
Fonts / Graphics / Symbolologies:																			
Font sizes	0.05 to 3.5 in.																		
Font styles	Arial, Arial 65, Courier New, Tahoma, Times New Roman plus more with Brady Workstation. Can also import TrueType fonts to printer																		
Symbols quantity	664																		
Symbols categories	<table border="0"> <tr> <td>Arrows</td> <td>Miscellaneous</td> </tr> <tr> <td>Fire safety</td> <td>Packaging</td> </tr> <tr> <td>First aid/rescue</td> <td>Personal protective</td> </tr> <tr> <td>Hazardous transport</td> <td>Equipment</td> </tr> <tr> <td>Hazmat GHS/CLP</td> <td>Prohibition</td> </tr> <tr> <td>Hazmat HSID</td> <td>Shapes</td> </tr> <tr> <td>Imported graphics</td> <td>Sign headers</td> </tr> <tr> <td>ISO graphics</td> <td>Warning</td> </tr> <tr> <td>Mandatory</td> <td>WHMIS</td> </tr> </table>	Arrows	Miscellaneous	Fire safety	Packaging	First aid/rescue	Personal protective	Hazardous transport	Equipment	Hazmat GHS/CLP	Prohibition	Hazmat HSID	Shapes	Imported graphics	Sign headers	ISO graphics	Warning	Mandatory	WHMIS
Arrows	Miscellaneous																		
Fire safety	Packaging																		
First aid/rescue	Personal protective																		
Hazardous transport	Equipment																		
Hazmat GHS/CLP	Prohibition																		
Hazmat HSID	Shapes																		
Imported graphics	Sign headers																		
ISO graphics	Warning																		
Mandatory	WHMIS																		
Barcode symbolologies - linear	Code 39 Code 128 Auto Interleaved 2 of 5 Additional through Brady Workstation																		
Barcode symbolologies - 2D	QR Code PDF417 Additional through Brady Workstation																		

Media / Supplies Information:	
Compatible media	B30 Series (manufactured after September 1, 2015)
Compatible ribbons	B30 Series (manufactured after September 1, 2015)
Die cuts vs continuous	Continuous tapes, pre-printed die cut labels, General die cut labels
Ribbon and label installation	Media: Supplied in cartridge, drops into place, 15 sec changeover Ribbon: Supplied in cartridge, snaps into place, 5 sec changeover
Custom media parts available	No
Media widths	0.5 to 4 in.
Compatible Brady Material Numbers	B-423, B-424, B-428, B-432, B-434, B-437, B-438, B-483, B-484, B-486, B-488, B-489, B-489, B-509, B-526, B-549, B-551, B-565, B-569, B-581, B-584, B-593, B-595, B-724, B-727, B-787, B854, B-855, B-7569
Software and Connectivity:	
Connectivity options	Stand-alone use, Ethernet, USB
Software compatibility	Brady Workstation
Physical / Operational Characteristics:	
Dimensions	11 in. H x 19 in. W x 14.25 in. D
Weight	36 LBS
Operating temperature range	50 to 104° F
Storage temperature range	-4 to 122° F
Operating humidity range	20% to 80% RH non-condensing
Storage humidity range	15% to 90% RH non-condensing
Power supply voltage	110V to 240V
Auto shutoff / power conserve	Yes
Agency Approvals / Regulatory Compliance:	
Enables industry compliance	USA and Canada - cULc Europe - CE (including Eu RoHS) Argentina - UL-AR and S Mark Mexico - UL NOM CoC Australia - RCM mark Russia - EAC Korea - KC China - CCC and RoHS India - BIS Taiwan - BSMI Exemption South Africa - LOA and SABS (No logo on product label)
U.S. patents	Multiple U.S. patents apply Printers: 6364552 B1; 6788324; 6768502 B2 BBP37 printer only: 6664995 B2; Ribbon cartridges: 6860658 B2; D480749
MSDS	n/a

Brady360® 5-Year Warranty

We have you covered. We always stand behind our products to make sure they exceed your expectations and to deliver you an unrivaled customer experience. We've strengthened our commitment to you with a **5-year printer warranty standard and free of charge** on our benchtop printer models.*

With a team of 30 certified tech support and repair technicians and our 5-year warranty backing you up, you can rest assured you'll have the support you need — every step of the way.

Our 5-year warranty covers repair parts and labor, one print head replacement, a free loaner printer, a stress-free printer setup session and much more. You also have access to additional fee-based support, including an on-site repair service, custom programming and advanced integrations services.

*Excludes repairs due to negligence, Wraptor™ model and handheld models. See BradyID.com/brady360 for full coverage details.



Printers

Catalog #	Description
BBP35	BBP35 Multicolor Sign and Label Printer
BBP37	BBP37 Color and Cut Sign and Label Printer

Printer accessories

Catalog #	Description
120994	Rolling case with handle, 2 pockets for supplies
B31-WIPER	5 pack of extra media wipers
PCK-6	Cleaning swabs that are pre-soaked in IPA (50 per pack)
76737	Transfer tape for cut-out objects (200 ft. roll)
BBP37-BLADE	Replacement XY cutting blade (1 each)

Brady Workstation

Visit workstation.bradylid.com

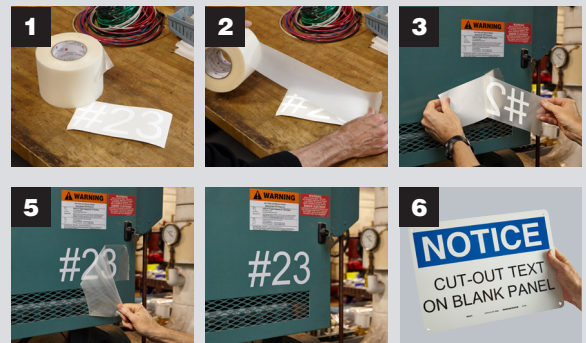
Catalog #	Description
Free Download	Brady Workstation Program
BWRK-GHS-DWN	GHS Labels app for Brady Workstation (download)
BWRK-LOW-DWN	Lockout Writer app for Brady Workstation (download)
Free Download	Custom Designer app for Brady Workstation
Free Download	Express Signs app for Brady Workstation
Free Download	Pipe Marker app for Brady Workstation
Free Download	Arrow Tape app for Brady Workstation
Free Download	Arc Flash app for Brady Workstation

Check workstation.bradylid.com for up-to-date apps.

▶ Transfer tape is the best way to apply cut-out shapes and text!

Transfer tape catalog #76737 (4.25 in. x 200 ft. roll)

1. Cut out your shape or text and weed away unneeded material.
2. Apply transfer tape over your cut-out objects and press firmly.
3. Peel back transfer tape which will lift and expose the adhesive side of your now pre-spaced objects.
4. Position object in place and press firmly onto final surface.
5. Peel back transfer tape at sharp angle to surface.
6. Works great for cut-out text on rigid sign panels too.



We identify and protect premises, products and people.

For more information or to learn more about our innovative
products, visit BradyID.com or call 1-888-272-3946.

Multiple U.S. patents apply
Printers: 6364552 B1; 6788324; 6768502 B2
BBP[®]37 printer only: 6664995 B2;
Ribbon cartridges: 6860658 B2; D480749



Y4179343 MS4179343

USA
Customer Service: 1-888-272-3946
Inside Sales: 1-888-311-0775
BradyID.com

Canada
Customer Service: 1-800-263-6179
BradyCanada.ca

Mexico
Customer Service: 1-800-262-7777
Inside Sales: 1-800-262-7777 ext 177
BradyLatinAmerica.com





The Labeling Possibilities Are Endless

Take a peek inside to see just what you can do with the BBP[®]35 and BBP[®]37 Sign and Label Printers

Color Your Way to an Improved Workplace

Brady's BBP®35 and BBP®37 Sign and Label Printers have unprecedented capabilities that set the new standard in safety and facility identification. With multi-color printing and shape-cutting capabilities, along with incredibly fast and easy printing, you can make signs and labels in the colors and shapes you need to make an impact.

Get faster, easier and more versatile printing with these key features:

- **Multiple print colors** – To make more noticeable and effective signs and labels
- **Text and shape cutting** – A built-in XY plotter-cutter can cut out shapes and text
- **Walk-up-and-print functionality** – Incredibly easy and intuitive functionality so anyone can print labels. Ideal for multiple users, and 5S/Lean events and areas
- **Automatic label setup** – Printers read information from the supply cartridge so you can start printing immediately; no need to manually set up or calibrate
- **Fast print speed** – Create labels faster with 5-inches-per-second print speed

Looking for the right label materials?

Download the Label and Ribbon Guide at BradyID.com/B30-B33Labels



The new standard in safety and facility identification

Because safety and productivity mean the world to you, you need signs and labels in your workplace that provide visual cues, warnings and organizational support at a glance. Whether you want durable maintenance and equipment identification, attention-grabbing safety signage, clear and consistent 5S/Lean manufacturing visuals, or effective operations labels – with more than 300 reliable label parts, now you can do it all!



Emergency Egress Identification

With emergency egress identification that glows in the dark throughout your facility, employees and guests can quickly exit the building even when faced with low-light and smoky conditions.

BradyGlo™ High-Intensity Photoluminescent Tape (B-526) Glows in the dark for up to 10 hours for marking evacuation routes and exits, emergency utility shut-offs, fire extinguishers, alarm pulls and vital equipment controls.



One-Point Labels

One-point labels help employees perform tasks safely and more efficiently by providing a quick, visual reminder at the point of need for an often over-looked step.

Indoor/Outdoor Vinyl (B-595) For facility and safety identification, featuring our most aggressive adhesive to conform to rough and highly textured surfaces, with 8-10 year outdoor durability.



Gradient Labels

The printer's Gradient Label App creates a strip of material showing exact inch or millimeter spacing using tick marks. Ideal for creating visual cues for accurate equipment settings and cutting parts to specific lengths.

Indoor/Outdoor Vinyl (B-595) Ideal material for industrial labeling of machinery, tanks, racks, tools and equipment — indoors or outdoors.



Lockout Tags and Labels

Visually tagging out equipment and identifying energy control points is a critical step in safeguarding workers around the equipment they operate, service and maintain.

Non-Adhesive Tags (B-551) Tags feature a pre-cut hole, perforation between tags and optional snap-in plastic grommets for added strength.

Indoor/Outdoor Vinyl (B-595) Industrial strength adhesive ideal for energy source labels.



Washdown Resistant Labels

Washdown-resistant labels withstand high pressure, heat, harsh chemicals and numerous washdown cycles, and some include a metal-detectable layer as well.

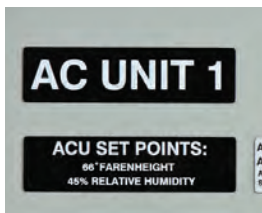
ToughWash® Washdown Resistant Labels (B-854, B-855) Choose B-855 for the standard material or B-854 for a metal detectable material to detect foreign debris in food stream.



Gauge Labels

Gauge labels can help you keep equipment working safely with less downtime by allowing workers to identify abnormalities in temperature and pressure levels at a glance.

Circle Gauge Labels (B-595) Use the printer's Circle Gauge App to specify diameter and range of values for small or large gauges and center hole size for accurate label placement and visibility of printed info.



Raised Panel Labels

With cost-effective raised panel labels you can clearly identify enclosures and panel controls to make tasks more efficient and errors occur less often.

Raised Profile Labels - Engraved Plate Substitutes - Rectangular Style (B-593) Costs up to 80% less than engraved legend plates, with 10-year outdoor durability.



Repositionable Organization Labels

Easily find what you're looking for and keep your operations running efficiently by labeling shelves, carts, tables and more with repositionable or magnetic labels.

Repositionable Vinyl (B-581) Label removes cleanly without leaving residue for temporary, removable and repositionable labeling.

Printable Magnetic (B-509) Easiest and quickest material for removing and repositioning.



Reflective Tape

When it comes to outdoor labeling for applications such as utility pedestals, hard hats, jobsite equipment and more, retro reflective tape is an ideal labeling solution.

Retro Reflective Tape (B-584) Highly reflective material shines back brightly when struck by light; ideal for outdoor and jobsite labeling.



Floor Marking

With printable floor marking tape, you can identify hazardous areas, traffic flow and designated storage locations throughout your facility.

ToughStripe® Printable Floor Marking Tape (B-483 with overlaminates) Features ultra-aggressive adhesive to withstand forklift and pallet jack traffic without tearing or lifting.



HazCom Labels

Create a compliant workplace with the HazCom/GHS labels you need – when and where you need them.

GHS / CLP Chemical Labels (B-7569)

Pre-printed red diamonds allow you to create 2-color GHS labels in one print pass, with the material durability to withstand moisture, chemicals and handling.



Arc Flash

Keep employees safe while they are working near energized equipment with labels that show system voltage, arc flash boundary and PPE information.

Arc Flash Labels (B-595) Easily create multi-color arc flash labels using pre-printed header supplies and the built in Arc Flash App on the BBP37 printer or Brady Workstation.



Safety Signs

Safety is an essential part of any facility, and supporting employee safety starts with having effective signage. You can create the safety signs you need in no time with blank labels or pre-printed header materials.

Pre-Printed Pre-Cut Blank Sign Headers (B-595)

Pre-printed headers allow you to create multi-color signs in just one print pass, with an indoor/outdoor material that conforms to rough, textured and other unique surfaces.



Pipe Markers

Save time tracing pipes with markers that identify the content of the pipes, direction of the flow, and source and destination points of the pipes.

Indoor/Outdoor Vinyl (B-595) Adheres to bare, insulated or jacketed pipes. Highly pliable for rough and curved surfaces, with 8-10 year outdoor durability.

Pre-printed vs. blank labels

When it comes to making safety, arc flash and GHS labels, you have two options:

Pre-printed label supplies: Use label tape that already has the header or diamonds pre-printed, allowing for multi-color labels in a single print pass.

Blank continuous label supply: Use white or color tape and a multi-color paneled ribbon and simply print all the elements on your label. This option helps to reduce supply inventory.

Open here!

We identify and protect premises, products and people.

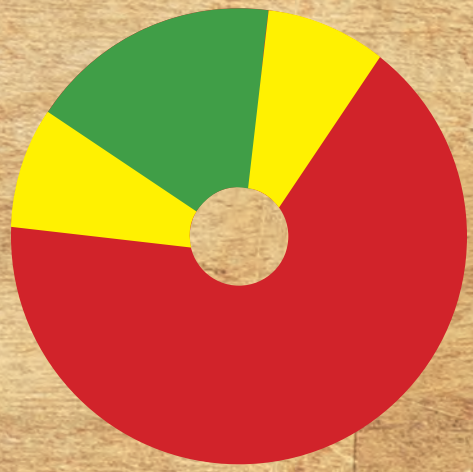
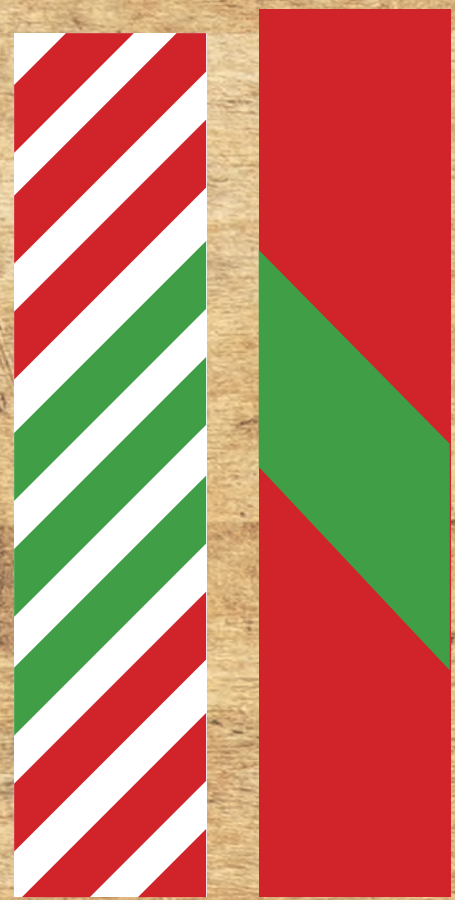
For more information or to learn more about our innovative products, visit BradyID.com or call 1-888-272-3946.

USA
Customer Service: 1-888-272-3946
Inside Sales: 1-888-311-0775
BradyID.com

Canada
Customer Service: 1-800-263-6179
BradyCanada.ca

Mexico
Customer Service: 1-800-262-7777
Inside Sales: 1-800-262-7777 ext 177
BradyLatinAmerica.com

CUT OUT TEXT



REFLECTIVE

LUBE POINT
NO. 8
1 PUMP
WEEKLY

NORMAL SET POINT
185°F 200psi

WARNING

MULTI-COLORED SIGNS!

TAGS

Multicolor tags for Safety, Maint, Lean 5S

2-250V AC, 50 Hz, 2.5A Max

WARNING! FIRE HAZARD! Do not touch for continued operation. Replace only with 3 Amp fuse (5x20mm)

FIBRE-TECH LLC - Phillips, WI - www.fot.com

MADE IN U.S.A.

DRILL/HOLE LOCATION

DANGER

HOT SURFACE
DO NOT TOUCH!

P-106-A

MAKE-UP PUMP 106A

Disconnect Location: Panel 4501 on Level 2 Mezzanine
Lockout Procedure: LOP-P106A

CAUTION

ROTATE GUARD COLLAR DOWN
BEFORE THREADING NEW JOB

10 hr GLOW

n-Propyl Alcohol

Highly flammable liquid and vapour. Causes serious eye damage. May cause drowsiness or dizziness. Keep away from heat/sparks/open flames/hot surfaces. No smoking. Do not breathe dust/fume/gas/mist/vapour/spray. Wear protective gloves/protective clothing/eye protection/face protection. IF IN EYES: seek medical attention.

DANGER 500 ml

WARNING

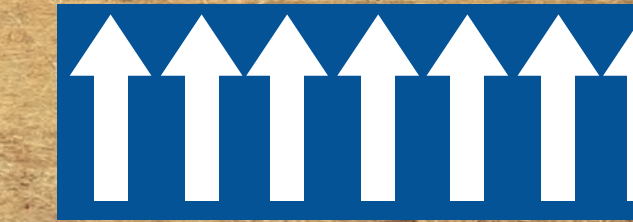
ARC FLASH AND SHOCK HAZARD
APPROPRIATE PPE REQUIRED

- 2'-0" - Flash Hazard Boundry
- 2.5 - cal/cm2 Flash Hazard at 18 inches
- #1 - PPE Level (FR shirt & FR pants, or FR coverall, eye protection, hard ht, VR rubber or leather gloves)

Shock hazard when cover is open/removed

Limited Approach
Restricted Approach
Prohibited Approach

PLATE NAME: PLATING LINE MCC FED FROM: PNL 213, BRKRS 10-18



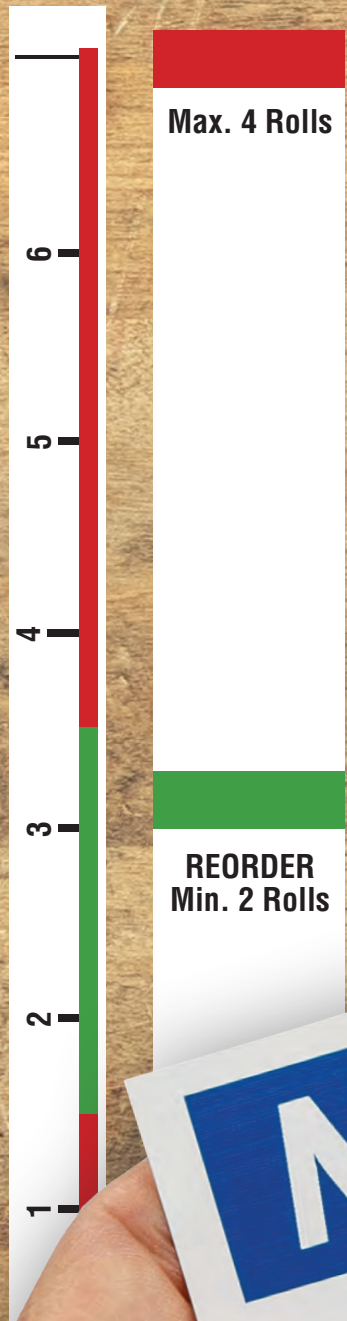
MEDICAL GAS TO

54% CAUS

Hydrogen Sulfide

Extremely flammable gas. Contains gas under pressure; may explode if heated. Causes skin irritation. Fatal if inhaled. May cause respiratory irritation. Very toxic to aquatic life. Keep away from heat/sparks/open flames/hot surfaces. No smoking. Do not breathe gas/vapours. Avoid release to the environment. IF INHALED: Remove victim to fresh air and keep at rest in a position comfortable for breathing. IF IN EYES: Rinse cautiously with water for several minutes. Remove contact lenses. If eye irritation persists, seek medical attention. Leaking gas fire: Do not extinguish, unless leak can be stopped safely. Eliminate all ignition sources. Safe to do so. Store in a well-ventilated place. Store locked up.

DANGER 250 ml



NOTICE
COLOR
YOUR WAY TO
BETTER LABELS

- 4" Wide Output
- Multi-Color Output
- Cut-Out Shapes & Text
- 20 second supply changes
- 5 ips Print Speed--Super Fast!
- Walk-up-and-print ease of use... anyone can do it!

ENCLOSURE-20
UPS SUBPANEL 6 ON BREAKER 41

480V 3Ø 60amp

SPEED
Lo Hi

#6 DIES

WVA

All labels were created using the BBP*35 and BBP*37 sign and label printers and are shown in their actual size.